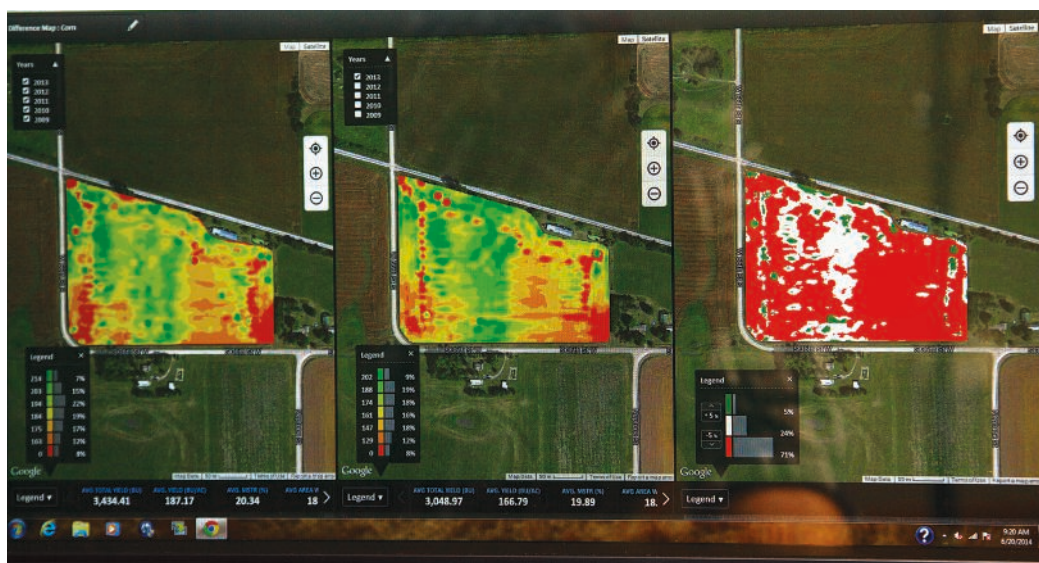


# Precision Technology



## John Deere Operations Center

- Single, secure place to setup, plan, monitor, **analyze**, and share your farm data – anytime or anywhere



By collecting field and machine data, you can Analyze performance metrics so you know how you did this season... and how you can plan for the next. With just a few clicks, you can wirelessly share data with trusted advisors and partners, and create detailed reports for accurate record keeping.

## Machine Sync License<sup>1</sup>

- Automates unloading on-the-go in order to reduce machine-to-machine interactions and allow operators to focus on operation
- Increase efficiency by showing multiple machines in the field at the same time
- Share coverage map and guidance lines for increased efficiency and complete field coverage when two machines are working in the same field



## AutoPath<sup>1</sup>

- Uses crop row data from your first pass to create accurate guidance lines for a more accurate harvest track
- Saves time while minimizing grain loss

<sup>1</sup> Available as part of the Automation 4.0 Package and G5 Advanced Package.

<sup>2</sup> Compared to previous model.

<sup>3</sup> JDLink hardware comes standard with the machine. You can turn on JDLink connected service in your John Deere Operations Center account for free. JDLink requires a cellular connection to transfer information from machine to Operations Center. Consult your John Deere Dealer for coverage availability.

## AutoTrac RowSense

- Cover more acres per day with less stress by extending AutoTrac into post emerge in-field operations such as spraying and harvest
- Protect crop yield when applying crop protectants and nutrients in stand crop by making sure that the sprayer or tractor stays off the crop rows
- Focus on quality of the job being performed and ensure that the machine is operating as it should rather than being concerned about steering the machine in standing crop

## PRECISION ESSENTIALS



### In-Cab Touchscreen Displays

Manage guidance lines, application rates, input placement, and more; G5 Displays offer more screen space, faster processing, and 1080p HD quality<sup>2</sup>



### StarFire 7500 Receiver

SF-RTK signal gives RTK accuracy without the need of a radio



### JDLink Connection

Streams machine and field data to your Operations Center account<sup>3</sup>

# Your Tractor, *UPGRADED*

## PRECISION UPGRADES



Learn more about tractor upgrades from John Deere.

### John Deere Autonomy **NEW**

Equip your tractor with the world's first autonomous tillage solution. Precision Upgrades now offers a kit that allows you to step out of the tractor and let it do the work for you, giving back your time, your farm, and your labor.

- Redirect labor to more critical tasks while your tractor does the tillage
- Maximize short operating windows by extending working hours without working longer yourself
- Do more work with existing resources
- Monitor your machine's work anytime, anywhere from Operations Center Mobile

### TRACTORS COMPATIBLE WITH AUTONOMY:

- Model year 2020.5 and newer 8R/8RX Tractors
- Model year 2022 and newer 9R/9RX Tractors

### TILLAGE TOOLS COMPATIBLE WITH AUTONOMY:

- Model year 2017 and newer 2230FH, 44.5 - 60.5 ft (13.5 - 18.4 m)
- Model year 2019 and newer 2430CP, 21 - 40 ft (6.4 - 12.2 m)
- Model year 2019 and newer 2660VT, 25.4 - 49.6 ft (7.5 - 15.1 m)
- Model year 2023 and newer 2680H, 25 - 45 ft (7.6 - 13.7 m)

### Rear Implement Ethernet

- Enables high bandwidth communication between the tractor and implement
- With an increase to 1 GB/s of CAN speed (previously 250 kb/s), tractors and implements can communicate high- definition data faster, resulting in better decision-making for customers and dealers
- Rear Implement Ethernet is required for SeedStar 5 and future precision; a building block to John Deere's autonomous solution
- Ethernet switch, connector in cab, connector on back of tractor, brackets, harnessing is included
- Current implement offerings requiring ethernet: implements with high data flow requirements (electric drive planters)

### Updated Compatibility for Rear Implement Ethernet:

- 7R: model year 2011 and newer
- 8R and 8RT model year 2011 and newer
- 8RX model year 2020.5 and newer
- 9R and 9RT model years 2012 and newer
- 9RX model year 2016 and newer

## Precision Technology

### Advanced License w/SF-RTK

Includes a one-year Essentials License in addition to the G5 Advanced License consisting of AutoTrac Implement Guidance (Passive), AutoTrac Turn Automation, AutoPath, In-Field Data Sharing, Machine Sync, and SF-RTK.

- AutoPath lets you use data from planting – or strip till and planting – to automatically create full-field guidance lines for secondary passes
- Let AutoTrac Turn Automation take over your turns, implement functions, and speed
- Reduce harvest chaos through combine and grain cart controls with Machine Sync
- AutoTrac Implement Guidance places your tool exactly where it needs to be, even on sidehills and around curves

- In-Field Data Sharing increases the efficiency of your field operations by monitoring the operations of up to six tractors, sprayers, nutrient applicators, or combines on one screen





## In-Cab Touchscreen Displays

Create A-B lines. Manage application rates. Improve input placement. No matter which John Deere display you choose, you can easily improve the operating experience for older John Deere tractors and mixed fleets.

Choose from the G5 or the larger G5<sup>Plus</sup> Display, which gives you 35% more screen space to add additional maps and widgets and 3x faster processing<sup>1</sup>.



## StarFire 7500 Receivers With SF-RTK

The StarFire 7500 – now with SF-RTK – delivers next-generation performance and dependability. A multi-constellation satellite signal reduces time needed to achieve full signal accuracy. Season-to-season repeatability minimizes guidance line, coverage, and boundary drift year after year.

- SF-RTK signal offers accuracy within 2.5 cm
- Up to 73% faster pull-in times compared to previous SF3 model
- Guaranteed 5-year+ repeatability, season to season
- Drop-in replacement for StarFire™ 6000 integrated or universal



## JDLINK Connection

Whether it's your fields, your machines, or your operators, JDLINK connects you to your entire operation. Anytime. Anywhere. With it, your machine and field data streams automatically to your Operations Center account. Just go to your Operations Center account and turn it on<sup>2</sup>.

## John Deere Operations Center

Unlock the full power of your farm data. Operations Center seamlessly connects data from your fields, your machines, and your operators and advisors. Simplified farm data management from one location allows you to **setup**, plan, monitor, analyze and share for better operation decisions.

- Review your season-to-season yield success and machine performance, so you can make changes to increase profitability
- Easily share data with trusted advisors to help you make data-driven decisions
- Experienced dealers available for setup and support; allow you to focus on your job
- Maintain complete control; you decide if your data is shared or removed at anytime



Setup helps you sync your in-cab displays with your Operations Center dashboard. Improve management of your fields and equipment.

Save time by reducing in-cab decisions and improve in-field work accuracy.

<sup>2</sup> JDLINK hardware comes standard with the machine. You can turn on JDLINK connected service in your John Deere Operations Center account for free. JDLINK requires a cellular connection to transfer information from machine to Operations Center. Consult your John Deere Dealer for coverage availability.

<sup>1</sup> Compared to previous model



# SUREPOINT™ AG SYSTEMS

SurePoint Ag Systems was founded in 2007 to help producers become more efficient by applying the right product, in the right place, at the right rate. SurePoint products work with many brands of implements and integrate with most existing technology. Whether John Deere, CaseIH, AgLeader®, Trimble®, Raven, they offer a wide range of compatibility options.

SurePoint Ag Systems operates as an independent business and each John Deere dealer has access to sell SurePoint products.

## PLANTING & SEEDING TECHNOLOGY

Upgrade your planter with advanced, ISOBUS-controlled systems that seamlessly integrate with your existing equipment. From seed metering to row unit control, row cleaning, and closing wheels, we deliver smarter solutions to optimize every pass in the field.

**MVX™**  
Electric Seed Meter

**GFX™**  
Hydraulic Row Cleaners

**RFX™**  
Row Unit Suspension

## FERTILIZER APPLICATION SYSTEMS

SurePoint starts by understanding your variables and then delivers custom-configured application systems for all types of farm equipment. Not all fertilizers are created equal. Their team of experts has developed the highest level of expertise, bringing together the right components to successfully achieve your application needs. They have a range of solutions from simple and basic, to some of the most advanced systems providing individual rate control of each row.

**SENTINEL**  
LIQUID ROW MONITOR

**LIQUISHIFT™**  
GEMS Variable Rate Technology

**THE ACCELERATOR**  
BY SUREPOINT AG SYSTEMS

**THE TOWER**  
110 V ELECTRIC PUMP

**PUMPRIGHT**  
HYDRAULIC DRIVE DIAPHRAGM PUMPS

**SPARTAN**  
DIRECT INJECTION

## SPRAY TENDER SYSTEM

QuickDraw® Is a fully automated sprayer tender system. Start by creating a recipe that is saved and used every time you load that mix of chemicals. Enter the application rate/acre you will be spraying and the size of load you need, either in total gallons or total acres to spray. QuickDraw calculates the correct amount of each chemical in the batch and automatically measures and loads each chemical as well as the correct amount of carrier and stops the pump when the batch is complete.

The QuickDraw Swing Down Eductor allows operators to work on ground level. Add manually measured products including dry AMS through the Swing Down Eductor. Also available with ChemBlade, for splitting, dumping, and rinsing jugs.

**QuickDraw**  
SPRAY TENDER SYSTEM

**CHEM-BLADE**

Ag Leader® is a registered trademarks of Ag Leader Technology Incorporated.

Case IH is a registered trademark of CNH Industrial America LLC.

Trimble is a trademark of Trimble Navigation Limited, registered in the United States and in other countries.



### Products Complementary to Deere:

- Dual Liquid Product on Planters
- QuickDraw for easy and accurate See & Spray™ tendering
- Precise NH<sub>3</sub> Control and Monitoring with Torpedo and Sentinel NH<sub>3</sub>

## ANHYDROUS APPLICATION SYSTEMS

The Sentinel™ NH<sub>3</sub> system allows in-cab monitoring of anhydrous to every row of the applicator.

The Torpedo™ Cooler is the central piece of the SurePoint Anhydrous Ammonia application system. It is a high capacity, extremely accurate, efficient heat exchanger. Couple the cooler with all plumbing and distribution components to get anhydrous from the tank to the shank.



## ADDITIONAL OFFERINGS

### Two Sentinel Controller Options

#### 1000 Model

- Single Product Functionality
- Utilizes SurePoint Ag's Level 1 ECU
- Pair Up to 3 ECU's for Multiple Functions

#### 2000 Model

- 4 Product Functionality
- Utilizes SurePoint Ag's Level 2 ECU
- Can Be Fully Customized to Your Operation

- **ISOBUS Control** : New in 2024: GFX controlled via cab display with Reflex ISOBUS platform.
- **Frame Mounted** : Toolbar mounting isolates row cleaner movements from the row unit allowing for more consistent seed placement.





# CUSTOM PRECISION UPGRADES

*Custom Precision Upgrades are an option to explore when a standard offering is not available. A team of engineers will work with you on your request to evaluate if your specific needs can be met with a Custom Precision Upgrade.*

*Reasons to submit a custom request may include, but are not limited to:*

- 1) No standard kit offering for the model year of equipment to be upgraded*
- 2) Equipment modifications bring uncertainty around compatibility*
- 3) Non-supported configurations that limit compatibility, such as unique row counts or spacing, or utilization of Hydraulic Planter Power Generator for ExactEmerge*

*The customs team works toward the goal of evaluating the request, and if possible, providing a quote back within a week. We want this process to be as seamless as possible and are confident there are product offerings that we can customize for your needs.*



# CHECK YOUR COMPATIBILITY



View Recommended  
Upgrades Compatible  
with **Your Planter**

Serial Number

Serial Number

or

Model

Select

Year

Select



Find the precision upgrade that's right for you with our  
Precision Upgrade compatibility tool.

Input the serial number or model number and year of your  
current planter to see what upgrades are available.

Available for planter and sprayer upgrades.



For Precision Upgrades compatible  
to your planter, scan this QR code or visit  
[JohnDeere.com](http://JohnDeere.com) and [JohnDeere.ca/PlanterUpgrades](http://JohnDeere.ca/PlanterUpgrades)



For Precision Upgrades compatible  
to your sprayer, scan this QR code or visit  
[JohnDeere.com](http://JohnDeere.com) and [JohnDeere.ca/SprayerUpgrades](http://JohnDeere.ca/SprayerUpgrades)

**JOHN DEERE**

Home Equipment Finance Parts & Service Digital Our Company & Purpose

Home > > Planter Upgrades Form

**PLANTER UPGRADES**

**Product Selector**

**1 Your Planter Information**

Year	Model	Seed Meter	Row Count
2016	1750 / 1750 (12 Rows)	Not Available	12

**2 Core Upgrades**

Select which compatible core upgrades you are interested in. Upgrades are built for specific machines. To obtain accurate list prices, please enter your serial number or contact your dealer for a quote. Some of the features presented may not be available for your machine. Please reach out to your dealer for more information or enter in your planter's serial number at step 1.

- ☐ **ExactEmerge™**  
Maintain accurate seed placement at speeds up to 10 mph. Industry exclusive SmartSeed™ technology uniformly carries seed from the meter to the trench while the dual electric meters provide infinite seed placement. Ships as a complete row-unit for faster installation time.
- ☐ **MaxEmerge™ SE**  
Improve seed population and spacing in those oddly-shaped, curved fields. The single electric meter is not limited entry cost for electric drive planter upgrades. Ships as a complete row-unit for faster installation time.
- ☐ **Individual Row Hydraulic Downforce**  
Improve plant emergence by consistently placing seed on each row unit at the desired depth, regardless of soil conditions. Active Hydraulic Downforce can be selected as an add-on when electric drive row units are selected.
- ☐ **ExactRate™ (High-rate less opener)**  
Maximize yield potential by delivering application rates of 60.0 to 200.0 lbs/ac (1" to 30 gpa) either in-burner or through the burner mounted fertilizer system.